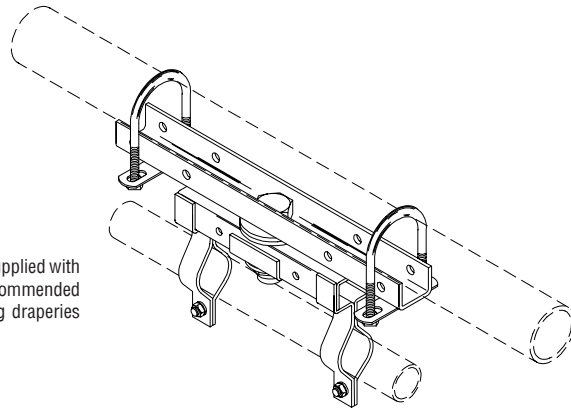


## MISCELLANEOUS TRACK HARDWARE



### NO. 6 PIVOT DEVICE

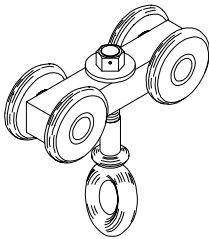
Heavy steel body U-bolts to pipe batten. Supplied with brackets for 1-3/8" O.D. pipe or tubing (recommended 6 foot maximum length). Allows masking draperies to be rotated to any angle.

### NO. 6B PIVOT DEVICE

Same as above with black finish.

### NO. 6X INDEXING PIVOT DEVICE

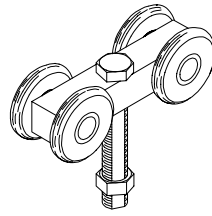
Pivot device with special plate to index rotation at 22-1/2 degree increments. Supplied with brackets for 1-3/8" O.D. pipe or tubing (recommended 6 foot maximum length)



### No. 139BS SCENERY CARRIER WITH EYE

4 steel ball bearing wheels riveted to machined steel body for use with No. 110S track. 3/8" forged eyebolt swivels in body and provides attachment point for scenery.

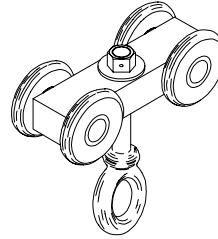
Working load limit: 150#



### No. 140BS SCENERY CARRIER

4 steel ball bearing wheels riveted to machined steel body for use with No. 110S track. 1/2" milled tap bolt provided for scenery attachment.

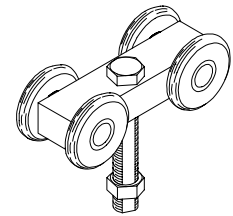
Working load limit: 150#



### No. 439BS SCENERY CARRIER WITH EYE

4 steel ball bearing wheels riveted to machined steel body for use with No. 410S track. 3/8" forged eyebolt swivels in body and provides attachment point for scenery.

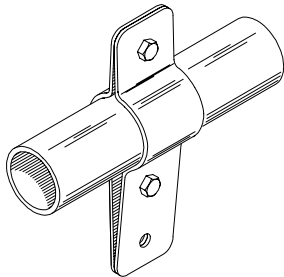
Working load limit: 150#



### No. 440BS SCENERY CARRIER

4 steel ball bearing wheels riveted to machined steel body for use with No. 410S track. 1/2" milled tap bolt provided for scenery attachment.

Working load limit: 150#



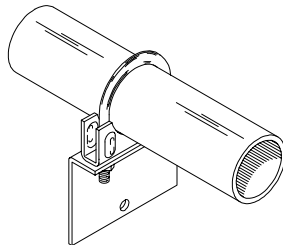
### PIPE CLAMP

Formed 12 gauge steel brackets clamp to 1-1/4" or 1-1/2" standard pipe for suspending curtain tracks parallel to pipe.

Working load limit: 150#

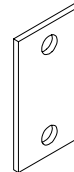
No. 435 - Zinc plated.

No. 435B - Black oxide finish.



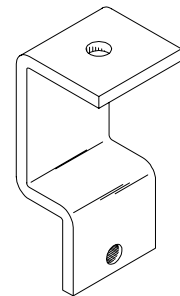
### No. 435R RIGHT ANGLE PIPE CLAMP

Formed 12 gauge steel bracket U-bolts to 1-1/2" standard pipe for suspending curtain track perpendicular to pipe.



### No. 435X EXTENSION STRAP

12 gauge steel strap with holes 1.9" apart. Used to extend pipe clamp when attaching to upper member of standard 1-1/2" pipe grid.



### No. 448 ROD SUSPENSION BRACKET

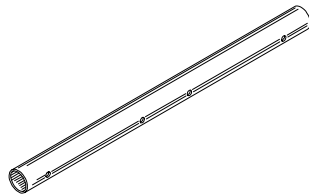
Formed 1/4" steel bracket with offset tab for suspending curtain track from 3/8" rod. Working load limit: 150 pounds.



### No. 442-2

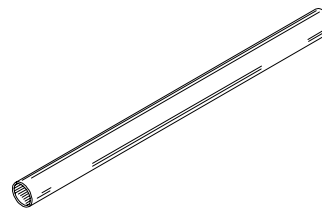
#### CAST IRON SASH WEIGHT

2 pound smooth cast iron weight with eye.



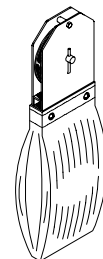
### No. 447 SPLICE

1-9/16" X .156" steel tubing, 24" long, for use as internal sleeve for 1-1/2" Sch. 40 pipe batten. With 4 drilled holes and (4) 3/8"-16 x 2-1/2" bolts and Nylock hex nuts.



### No. 447A SPLICE

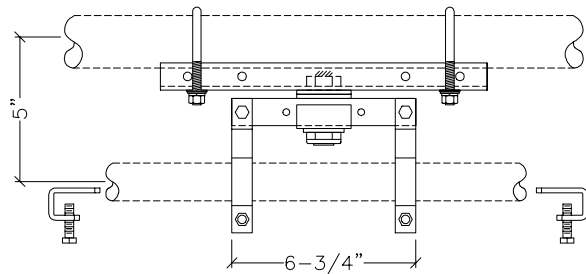
Same as 447 Splice except no attachment holes. (4) 3/8"-16 x 2-1/2" bolts and Nylock hex nuts provided.



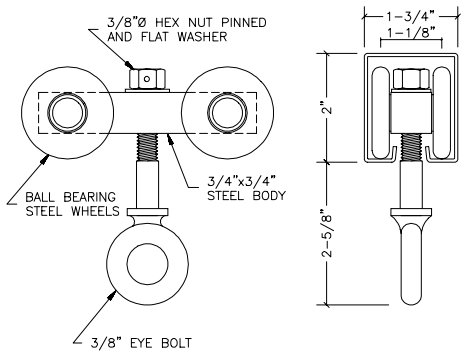
### No. 643 SAND BAG TENSION PULLEY

6" Nylatron GS sheave with precision ball bearings in specially designed housing with heavy duty sand bag. For maintaining proper operating line tension on flying curtains. Supplied without sand.

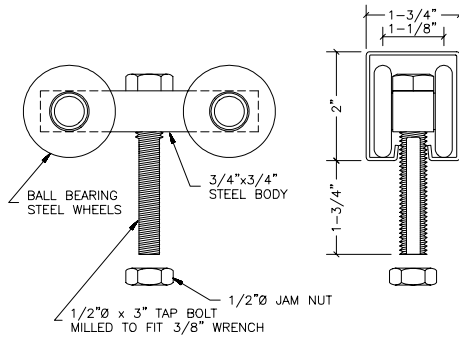
# MISCELLANEOUS TRACK HARDWARE DIMENSIONS



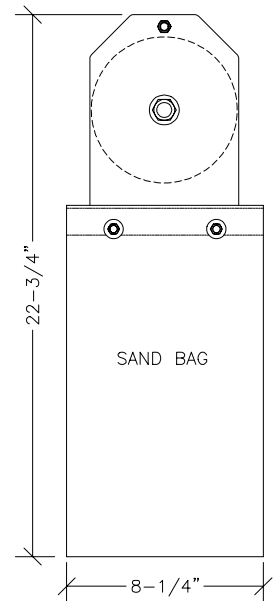
No. 6 Pivot Device



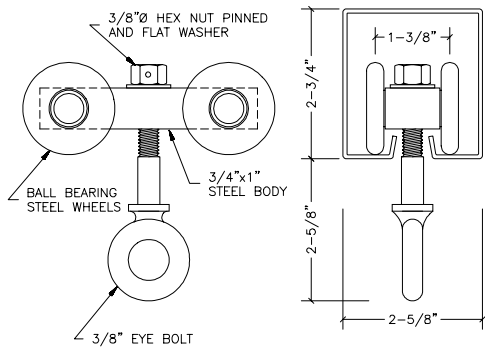
No. 139BS Scenery Carrier  
with Eye



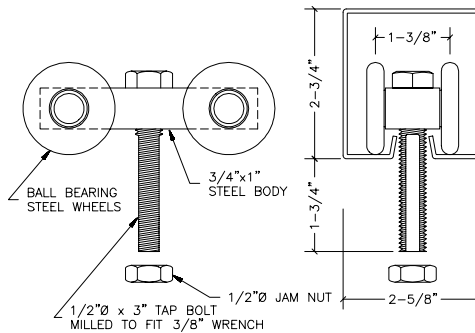
No. 140BS Scenery Carrier



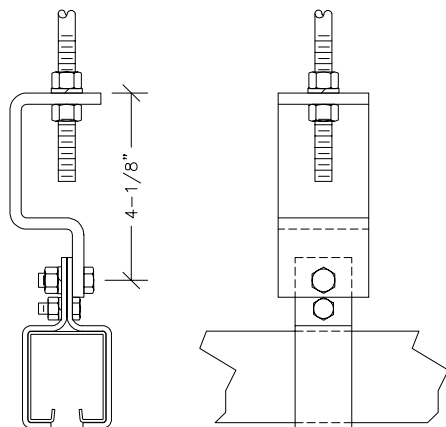
No. 643  
Sand Bag  
Tension Pulley



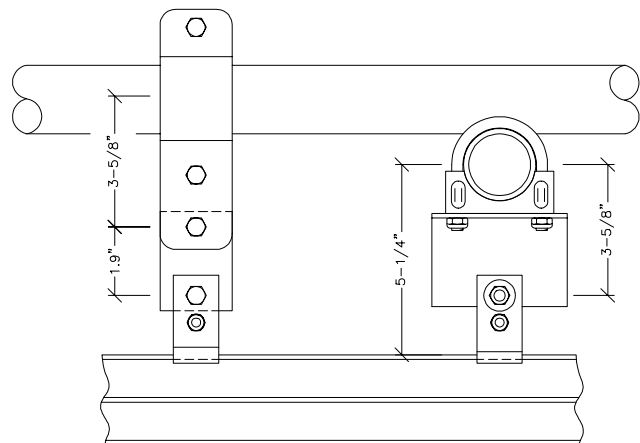
No. 439BS Scenery carrier  
with Eye



No. 440BS Scenery Carrier



No. 448 Rod Suspension Hanger



No. 435 Pipe Clamp  
with No. 435X  
Extension Strap

No. 435R  
Pipe Clamp