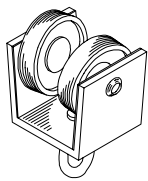
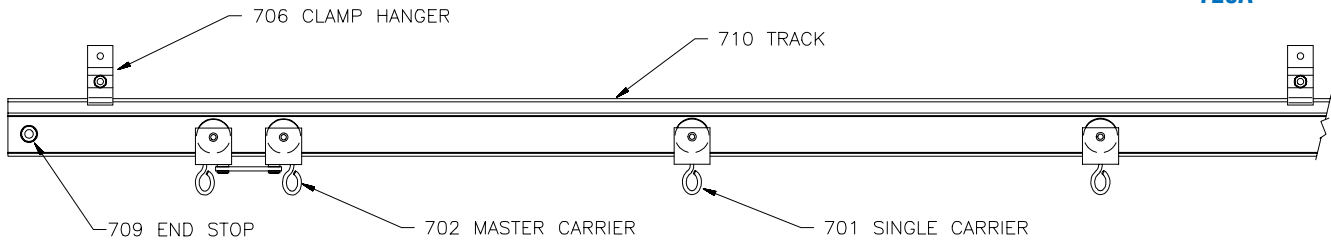


# 700 SERIES LIGHT DUTY CURVED TRACK

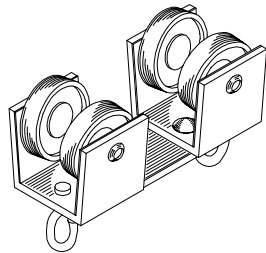
## COMPLETE TRACK MODEL NUMBERS

701A  
716A  
728A



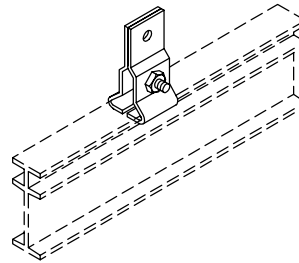
### No. 701 SINGLE CARRIER

2 Delrin wheels riveted to extruded aluminum body with swivel hook. Nylatron glide strips reduce friction and noise.



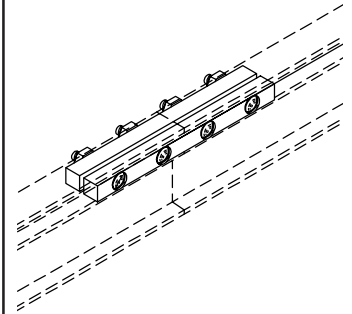
### No. 702 MASTER CARRIER

2 No. 701 carriers swivel on steel connecting plate. 1 pair suggested for each walk-along curtain.



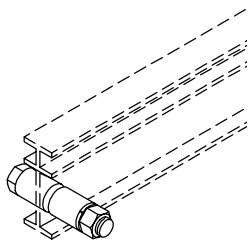
### No. 706 CLAMP HANGER

Formed steel brackets clamp to track. Adjusts to any position. 1 pair pictured.



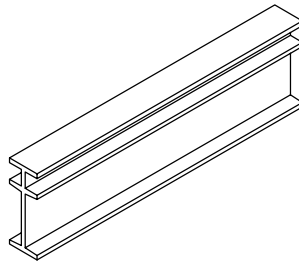
### No. 707 SPLICE

Steel brackets align and lock track together. 1 pair pictured.



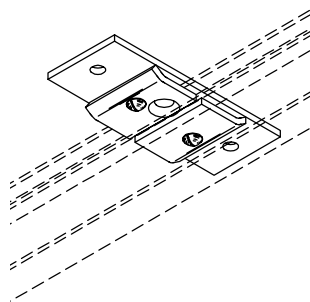
### No. 709 END STOP

Bolt with steel spacers to prevent carriers from travelling beyond desired location. 1 pair required for each track.



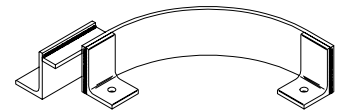
### No. 710 TRACK

6063-T5 extruded aluminum .094" thick. 20' stock lengths.



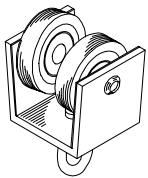
### No. 711 CEILING HANGER

Tapped steel plate mounts flush to ceiling. Track clamps to bracket with offset clips.



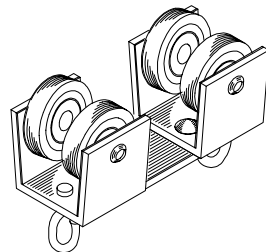
### No. 712 TRACK BENDER

Steel tool designed for manual bending of aluminum tracks. Must be anchored to floor or stationary table.



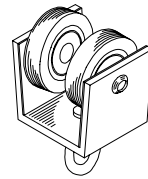
### No. 716 SINGLE CARRIER

Nylon-tired ball bearing wheels riveted to extruded aluminum body with swivel hook. Nylatron glide strips reduce friction and noise.



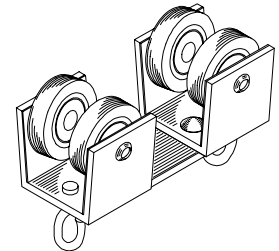
### No. 717 MASTER CARRIER

2 No. 716 carriers swivel on steel connecting plate. 1 pair suggested for each walk-along curtain.



### No. 728 SINGLE CARRIER

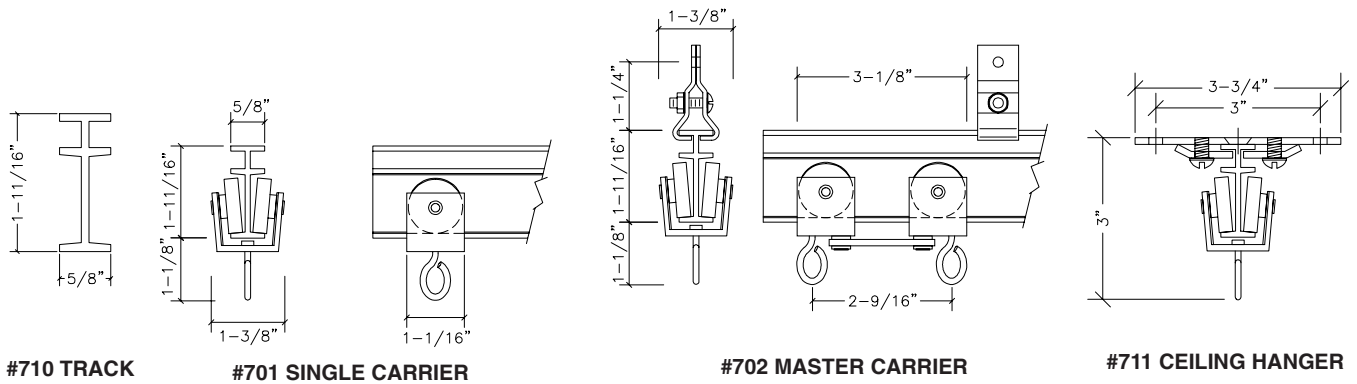
Neoprene-tired ball bearing wheels riveted to extruded aluminum body with swivel hook. Nylatron glide strips reduce friction and noise.



### No. 729 MASTER CARRIER

2 No. 728 carriers swivel on steel connecting plate. 1 pair suggested for each walk-along curtain.

## 700 SERIES TRACK DIMENSION DETAIL



## 700 SERIES COMPLETE TRACK COMPONENT GUIDE

PART #	DESCRIPTION	701A	716A	728A
701	Single Carrier	●		
702	Master Carrier	●		
706	Clamp Hanger	●	●	●
707 *	Splice	●	●	●
709	End Stop	●	●	●
710 *	Track	●	●	●
711	Ceiling Hanger	**	**	**
716	Nylon B.B. Single Carrier		●	
717	Nylon B.B. Master Carrier		●	
728	Neoprene B.B. Master Carrier			●
729	Neoprene B.B. Master Carrier			●

\* Track lengths and splices supplied as required.

\*\* For ceiling mounted applications, No. 711 provided in lieu of No. 706 Clamp Hanger.

### GENERAL SPECIFICATIONS: LIGHT DUTY CURVED TRACK

Provide **Model 701A** as manufactured by H & H Specialties Inc., South El Monte, CA.

Track shall be 1-11/16" I-beam, with 5/8" top, intermediate and bottom flanges, extruded from 6063-T5 aluminum. Provide unspliced in lengths up to 20'.

Suspend track on 5' maximum centers with two-piece clamp hanger formed from 14 gauge steel. Install end stop at each track end. Where lengths exceed 20', connect tracks with 4" long, two-piece splicing clamp of cold finished steel.

Provide single carriers, spaced on 12" centers, constructed of two Delrin wheels fastened parallel to extruded aluminum carrier body with swivel hook for attachment of curtain. Attach Nylatron wear strips at contact points between carriers and track to minimize friction and noise.

Master carriers shall be two single carrier assemblies joined by a steel connecting plate.

All steel components shall be zinc plated to resist corrosion.

Also available as **Model 716A** with nylon-tired ball bearing wheels and **Model 728A** with neoprene-tired ball bearing wheels.