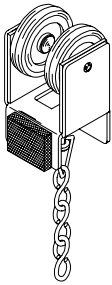
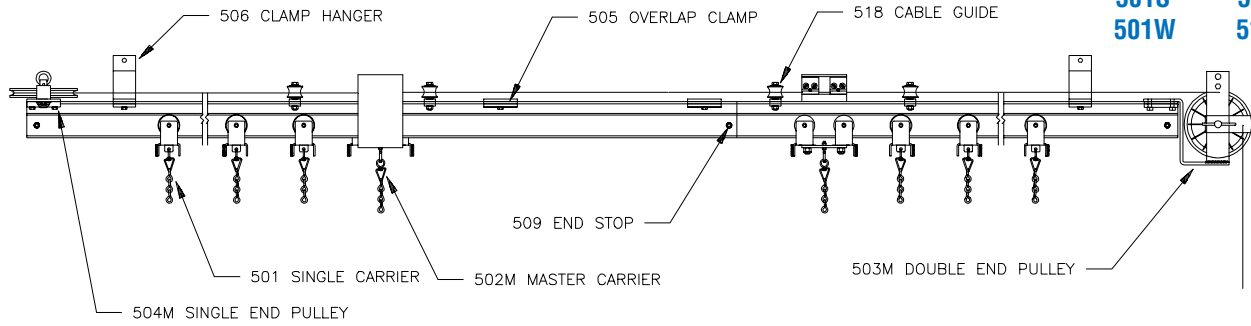


500 SERIES HEAVY DUTY CURVED TRACK

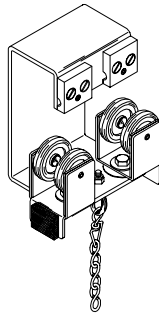
**COMPLETE TRACK
MODEL NUMBERS**

501C 516C
501S 516S
501W 516W



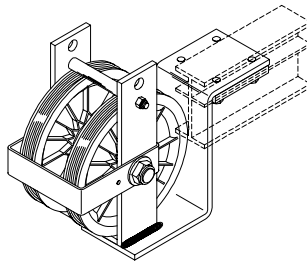
No. 501 SINGLE CARRIER

2 neoprene-tired ball bearing wheels riveted to plated steel body with heavy duty hook, swivel and trim chain. Nylatron glide strips and rubber bumper reduce friction and noise.



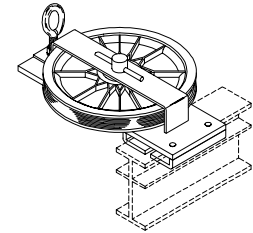
MASTER CARRIER

2 No. 501 carriers swivel on formed steel body with 2 clamps for anchoring line or cable. 1 pair required for overlapping tracks.
No. 502 - for 3/8" operating line.
No. 502M - for 3/16" operating cable.



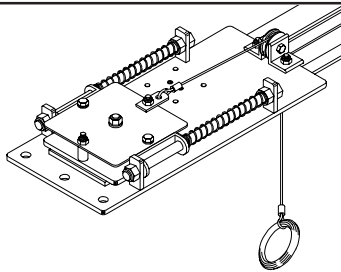
DOUBLE END PULLEY

6" diameter Nylatron GS sheaves with sealed precision ball bearings. Heavy duty steel housing clamps to top flange of track.
No. 503 - grooved for 3/8" operating line.
No. 503M - grooved for 3/16" operating cable.



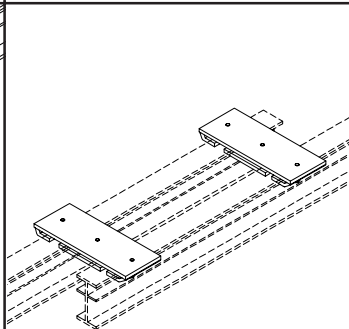
SINGLE END PULLEY

6" diameter Nylatron GS sheave with sealed precision ball bearings. Heavy duty steel housing clamps to top flange of track.
No. 504 - grooved for 3/8" operating line.
No. 504M - grooved for 3/16" operating cable.



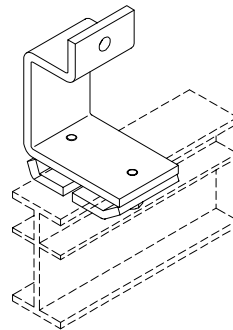
**No. 504T
TENSIONING END PULLEY**

4" diameter steel sheave with sealed precision ball bearings. Heavy duty steel housing clamps to top flange of track and provides constant cable tension on large motorized tracks.



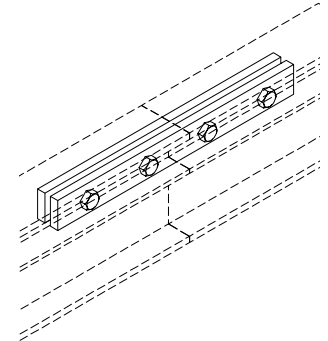
No. 505 OVERLAP CLAMP

Formed steel clamps align tracks at overlap. 1 set pictured.



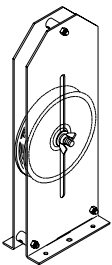
No. 506 CLAMP HANGER

Formed steel bracket for suspending track. Track clamps to bracket with offset clips.



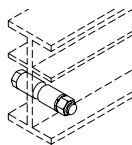
No. 507 SPLICE

Steel brackets align and lock track sections together. 1 pair pictured.



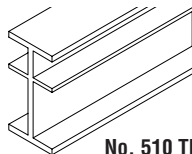
**No. 508, 6" ADJUSTABLE
FLOOR BLOCK**

6" diameter Nylatron GS sheave with sealed precision ball bearings in heavy duty steel housing with 9" vertical adjustment. Grooved to accept 3/8" operating line.



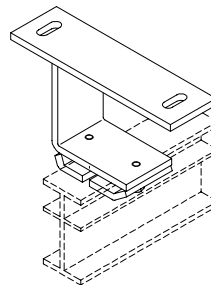
No. 509 END STOP

Bolt with steel spacers to prevent carriers from travelling beyond desired location. 2 pair required for overlapping tracks.



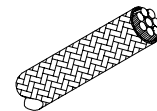
No. 510 TRACK

6063-T5 extruded aluminum .187" thick. 20" and 24" stock lengths.



No. 511 CEILING HANGER

Formed steel bracket mounts to ceiling. Track clamps to bracket with offset clips.



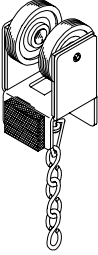
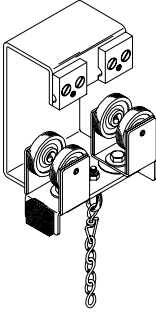
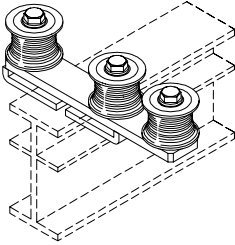
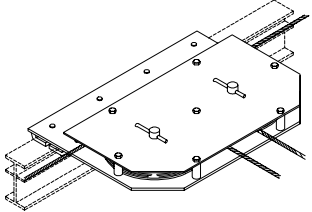
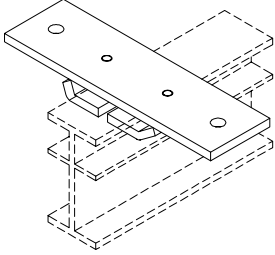
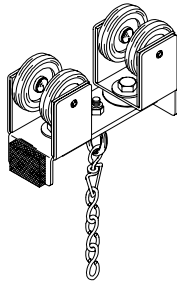
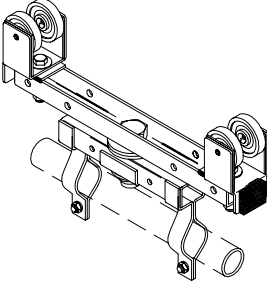
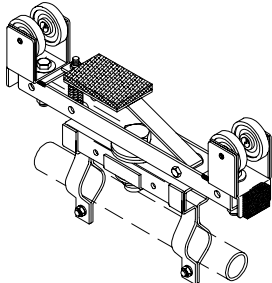
No. 514 OPERATING LINE

3/8" diameter black polyester double braided over solid polyester core for manual operation.



No. 515 OPERATING CABLE

3/16" diameter black polyester braided over 3/32" galvanized aircraft cable.

 <p>No. 516 SINGLE CARRIER 2 nylon-tired ball bearing wheels riveted to plated steel body with heavy duty hook, swivel and trim chain. Nylatron glide strips and rubber bumper reduce friction and noise.</p>	 <p>MASTER CARRIER 2 No. 516 carriers swivel on formed steel body with 2 clamps for anchoring line or cable. 1 pair required for overlapping tracks. No. 517 - for 3/8" operating line. No. 517M - for 3/16" operating cable.</p>	 <p>CABLE GUIDE 3 Nylatron GS rollers mounted to tapped steel bracket. Bracket mounts to track with offset clips. Suggested spacing: 5'. Additional guides required at each curve. No. 518 - 5/16" shielded ball bearings. No. 519 - 3/8" sealed precision ball bearings.</p>	 <p>No. 521 CENTER TAKE-OFF PULLEY Steel housing contains 6" diameter Nylatron GS sheaves with sealed precision ball bearings. Used when operating lines must be turned horizontally toward curtain machine or mule block.</p>
 <p>No. 531 FLUSH CEILING HANGER Tapped steel plate mounts flush to ceiling. Track clamps to bracket with offset clips. For use on walk-along tracks only.</p>	 <p>WALK-ALONG MASTER CARRIER 2 single carriers swivel on steel connecting plate with heavy duty hook, swivel and trim chain. No. 502W - Neoprene-tired wheels. No. 517W - Nylon-tired wheels</p>	 <p>No. 50 PIVOT DEVICE Heavy steel construction with nylon-tired ball bearing wheels. Supplied with brackets for 1-3/8" O.D. pipe or tubing (recommended 6 foot maximum length). Allows masking draperies to be rotated to any angle. Working load limit: 75 pounds.</p>	 <p>No. 50BK BRAKE KIT Spring loaded arm with neoprene pad. Add to pivot device to prevent movement along track.</p>

500 SERIES COMPLETE TRACK COMPONENT GUIDE

PART #	DESCRIPTION	501C	501S	501W	516C	516S	516W
501	Neoprene B.B. Single Carrier	●	●	●			
502*	Neoprene B.B. Master Carrier	●	●				
502W	Walk-Along Master Carrier			●			
503*	Double End Pulley	●	●		●	●	
504*	Single End Pulley	●	●		●	●	
505	Overlap Clamp	●	●		●	●	
506	Clamp Hanger	***	***	***	***	***	***
507**	Splice	●	●	●	●	●	●
508*	Adjustable Floor Block	●	●		●	●	
509	End Stop	●	●	●	●	●	●
510**	Track	●	●	●	●	●	●
511	Ceiling Hanger	●	●		●	●	
514*	3/8" Operating Line						
516	Nylon B.B. Single Carrier				●	●	●
517*	Nylon B.B. Master Carrier				●	●	
517W	Walk-Along Master Carrier						●
518	Cable Guide	●	●		●	●	
531	Flush Ceiling Hanger			●			●

- * For motorized applications, the suffix "M" is added to the master carrier and end pulley part numbers, the floor block is eliminated, and #515 cable is substituted for #514 hand line.
- ** Track lengths and splices supplied as required.
- *** For suspended applications, #506 clamp hangers are substituted for the ceiling hangers.

GENERAL SPECIFICATIONS: HEAVY DUTY CURVED TRACK

Provide **Model 501C** as manufactured by H & H Specialties Inc., South El Monte, CA.

Track shall be 3-3/8" I-beam, with 1-5/8" top, intermediate and bottom flanges, extruded from 6063-T5 aluminum. Track shall be factory curved and provided unspliced in lengths up to 24'.

Suspend track on 5' maximum centers with clamp hanger formed from 1/4" steel. Provide 2' overlap at center, rigidly separated by two overlap clamps. Where lengths exceed 24', connect tracks with 8" long, two-piece splicing clamp of 1/4" steel.

Provide single carriers, spaced on 12" centers, constructed of two neoprene-tired ball bearing wheels fastened parallel to formed steel carrier body with heavy duty hook, swivel and trim chain for attachment of curtain. Attach Nylatron wear strips at contact points between carriers and track to minimize friction and noise. Install neoprene bumpers to carriers to further reduce noise.

Master carriers shall be two single carrier assemblies joined by a steel pivot body with arm extending above track for anchoring operating line with two cord clamps.

Single and double end pulleys shall clamp securely to the top flange of the track and shall be equipped with 6" diameter Nylatron GS sheaves grooved for 3/8" operating line. Install two sealed 5/8" precision ball bearings in each sheave. Lock shaft to side plate on head end with 3/16" keeper pin to prevent rotation and install fine-threaded nylon insert lock nut.

Provide floor block in 12 gauge steel housing containing 6" Nylatron GS sheave with two 3/8" sealed precision ball bearings. Sheave axle shall lock at any point within 9" vertical slots to allow tension adjustment of operating line.

Black operating line shall be 3/8" diameter, stretch-resistant rope with spun polyester outer jacket double braided over solid polyester core.

Install guide assemblies on 5' centers to direct the operating line along the top of the track, allowing curves in any direction. Assembly shall consist of three Nylatron GS guide spools with two shielded ball bearings each mounted to 1/4" steel body and clamped to the top flange of the track.

All steel components shall be zinc plated to resist corrosion.

Provide **Model 516C** as manufactured by H & H Specialties Inc., South El Monte, CA.

Track shall be 3-3/8" I-beam, with 1-5/8" top, intermediate and bottom flanges, extruded from 6063-T5 aluminum. Track shall be factory curved and provided unspliced in lengths up to 24'.

Suspend track on 5' maximum centers with clamp hanger formed from 1/4" steel. Provide 2' overlap at center, rigidly separated by two overlap clamps. Where lengths exceed 24', connect tracks with 8" long, two-piece splicing clamp of 1/4" steel.

Provide single carriers, spaced on 12" centers, constructed of two nylon-tired ball bearing wheels fastened parallel to formed steel carrier body with heavy duty hook, swivel and trim chain for attachment of curtain. Attach Nylatron wear strips at contact points between carriers and track to minimize friction and noise. Install neoprene bumpers to carriers to further reduce noise.

Master carriers shall be two single carrier assemblies joined by a steel pivot body with arm extending above track for anchoring operating line with two cord clamps.

Single and double end pulleys shall clamp securely to the top flange of the track and shall be equipped with 6" diameter Nylatron GS sheaves grooved for 3/8" operating line. Install two sealed 5/8" precision ball bearings in each sheave. Lock shaft to side plate on head end with 3/16" keeper pin to prevent rotation and install fine-threaded nylon insert lock nut on threaded end.

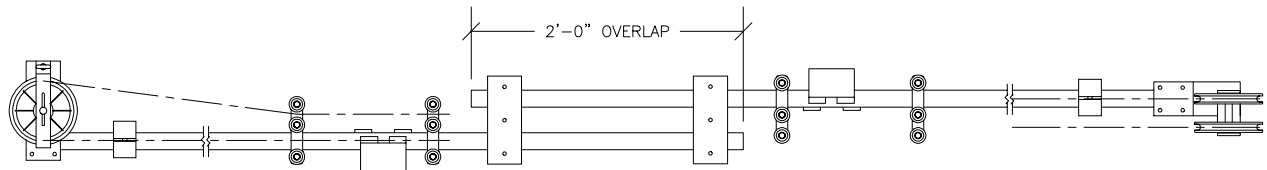
Provide floor block in 12 gauge steel housing containing 6" Nylatron GS sheave with two 3/8" sealed precision ball bearings. Sheave axle shall lock at any point within 9" vertical slots to allow tension adjustment of operating line.

Black operating line shall be 3/8" diameter, stretch-resistant rope with spun polyester outer jacket double braided over solid polyester core.

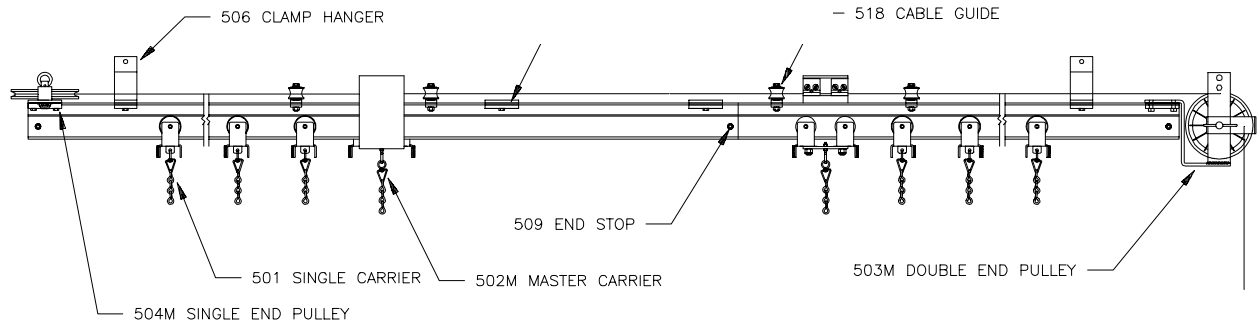
Install guide assemblies on 5' centers to direct the operating line along the top of the track, allowing curves in any direction. Assembly shall consist of three Nylatron GS guide spools with two shielded ball bearings each mounted to 1/4" steel body and clamped to the top flange of the track.

All steel components shall be zinc plated to resist corrosion.

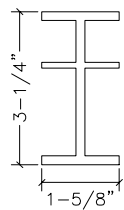
500 SERIES TRACK DIMENSION DETAIL



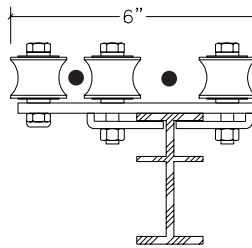
PLAN - MODEL 501C COMPLETE TRACK



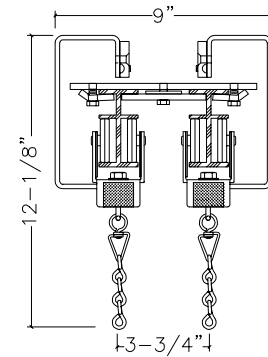
ELEVATION - MODEL 501C COMPLETE TRACK



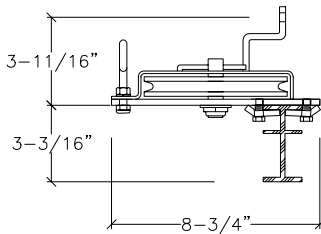
#510 TRACK



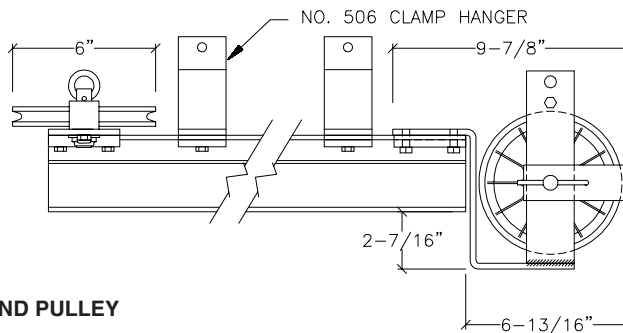
#518 CABLE GUIDE



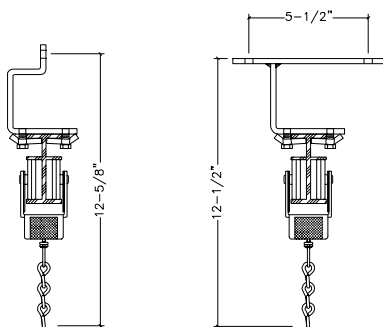
TRACKS AT CENTER OVERLAP



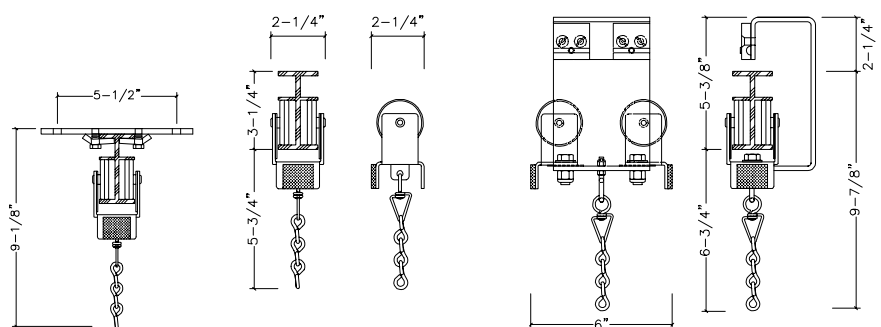
#504 SINGLE END PULLEY



#503 DOUBLE END PULLEY



#506, #511 AND #531 TRACK HANGERS



#501 SINGLE CARRIER AND #502 MASTER CARRIER