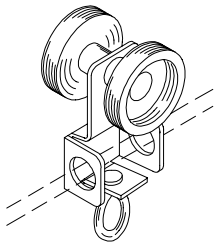
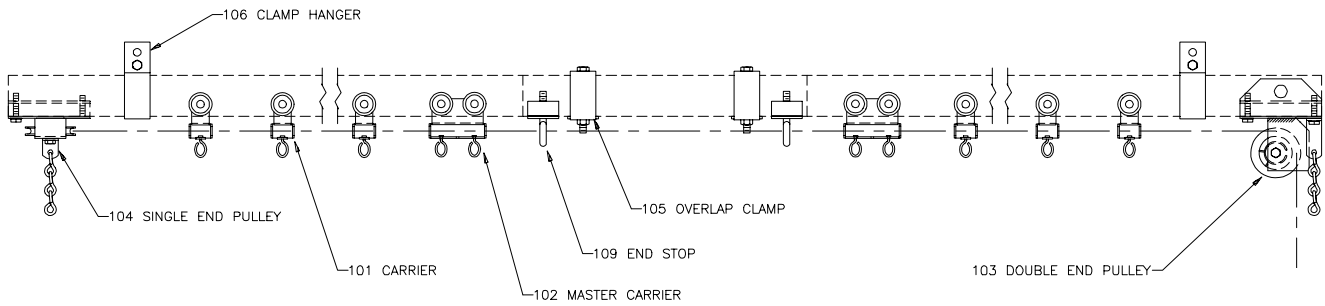


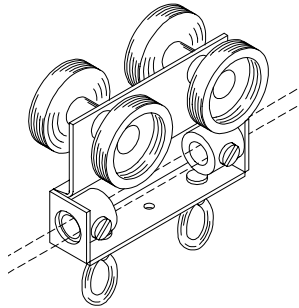
100 SERIES STANDARD DUTY STRAIGHT TRACK

**COMPLETE TRACK
MODEL NUMBERS**
101S 101A
116S 116A



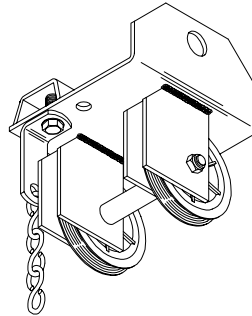
No. 101 SINGLE CARRIER

2 polyethylene wheels riveted to plated steel body with swivel hook.



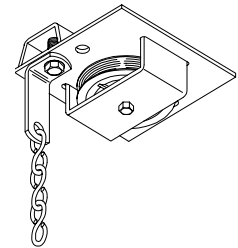
No. 102 MASTER CARRIER

4 polyethylene wheels riveted to steel body with 2 swivel hooks. Supplied with 2 clamps for anchoring line or cable. 1 pair required for overlapping tracks.



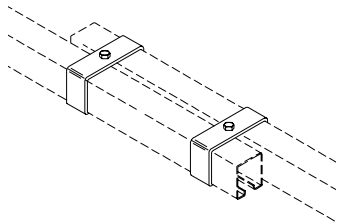
No. 103 DOUBLE END PULLEY

2-1/2" diameter Nylatron GS sheaves with shielded ball bearings. Steel housing clamps to underside of track. Chain bracket for securing offstage curtain edge.



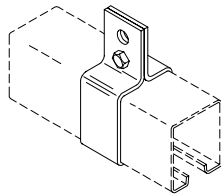
No. 104 SINGLE END PULLEY

2-1/2" diameter Nylatron GS sheave with shielded ball bearing. Steel housing clamps to underside of track. Chain bracket for securing offstage curtain edge.



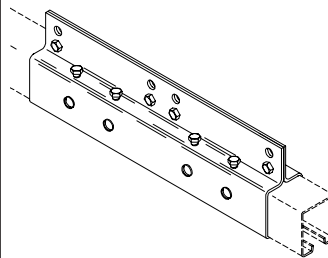
No. 105 OVERLAP CLAMP

Formed steel clamps to align track at overlap. 1 set pictured.



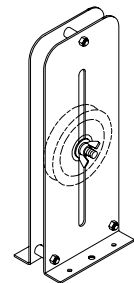
No. 106 CLAMP HANGER

Formed steel brackets clamp to track. Adjusts to any position. Suspend track with welded chain or wire rope. 1 pair pictured.



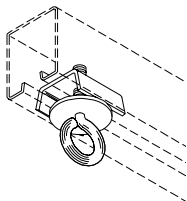
No. 107 SPLICE

Formed steel brackets align and lock track sections together. 1 pair pictured.



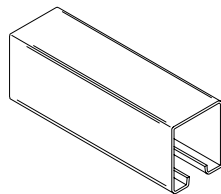
No. 108 ADJUSTABLE FLOOR BLOCK

4" diameter Nylatron GS sheave with shielded ball bearing in steel housing. 9" vertical adjustment.



No. 109 END STOP & CORD SUPPORT

Steel clamp with eye to support operating line and prevent carriers from travelling beyond desired location. 1 pair required for overlapping tracks.

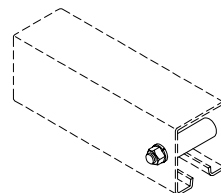


No. 110A TRACK

6063-T5 extruded aluminum .080" thick. 20' and 24' stock lengths.

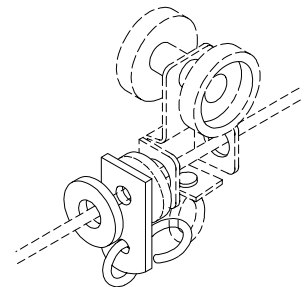
No. 110S TRACK

16 gauge roll-formed galvanized steel. 8', 10', 12', 16', 18', 20', 24' and 26' stock lengths.



No. 111 END STOP

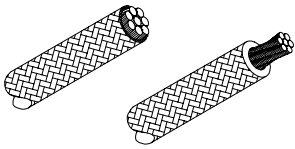
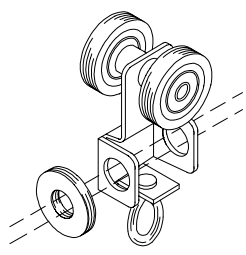
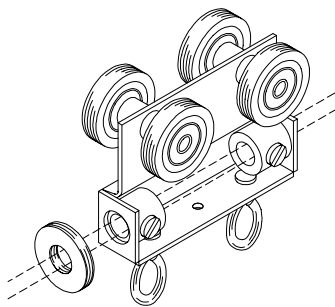
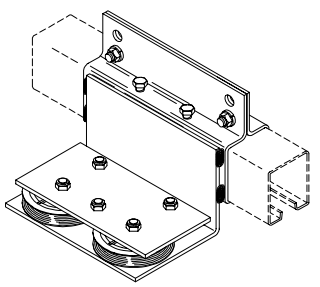
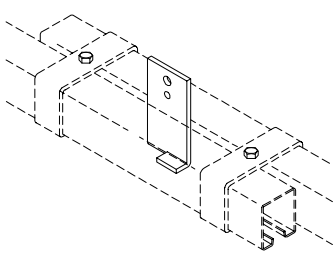
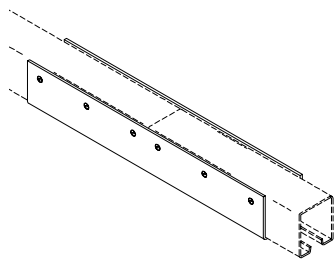
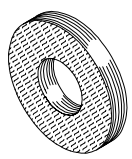
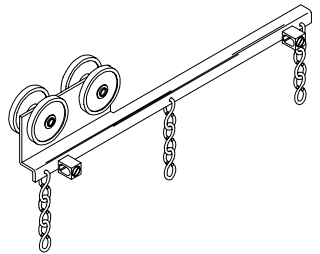
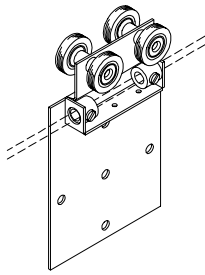

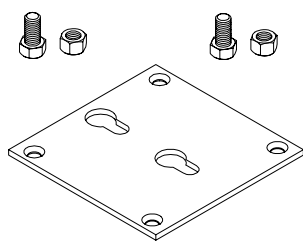
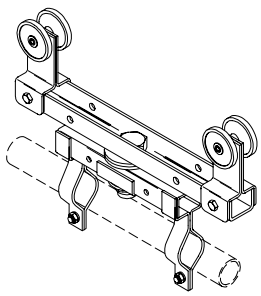
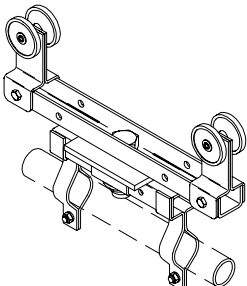
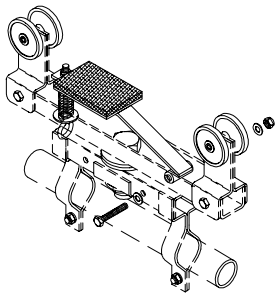
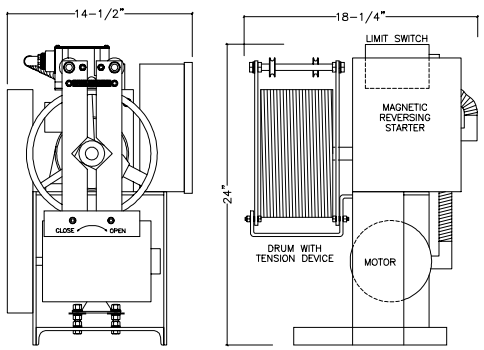
Bolt with horizontal pipe spacer to prevent carriers from travelling beyond desired location.



REAR FOLD GUIDE

Allows curtain to fold at offstage edges. Supplied with 1 rubber bumper.

No. 112 - for use with 1/4" operating line.
No. 113 - for use with 3/16" operating cable.

 <p>No. 114 OPERATING LINE 1/4" diameter black polyester double braided over solid polyester core for manual operation.</p> <p>OPERATING CABLE Black polyester jacket braided over 3/32" galvanized aircraft cable..</p> <p>No. 115 - 3/16" diameter No. 125 - 1/4" diameter</p>	 <p>No. 116 SINGLE CARRIER 2 nylon-tired ball bearing wheels riveted to steel body with swivel hook. Supplied with 1 rubber bumper.</p>	 <p>No. 117 MASTER CARRIER 4 nylon-tired ball bearing wheels riveted to steel body with 2 swivel hooks. Supplied with 2 rope clamps and 1 rubber bumper. 1 pair required for overlapping tracks.</p>	 <p>No. 121 CENTER TAKE-OFF Steel housing contains 2-1/2" diameter Nylatron GS sheaves with shielded ball bearings. Used when operating lines must be turned horizontally toward curtain machine or mule block.</p>
 <p>No. 126 CENTER PIPE SUPPORT Formed steel bracket used to support tracks at overlap.</p>	 <p>No. 127 CEILING SPLICE To align and lock track sections together on ceiling mounted tracks. 1 pair pictured.</p> <p>Note: Cannot be used with No. 132 overlap master or No. 10 pivot device.</p>	 <p>No. 130 ROUND RUBBER BUMPER 1/8" neoprene bumper placed between carriers to reduce noise.</p>	 <p>No. 132 OVERLAP MASTER 1-3/4" O.D. nylon wheels riveted to steel body with 9" offset arm. Used to overlap curtains on continuous track. Clamps provided to secure operating line. 1 pair required for overlapping curtains.</p>
 <p>No. 134 SIDE MASKING MASTER CARRIER No. 119 Master Carrier with 3-3/4" x 5-3/4" steel plate for attaching side masking frame. Supplied with 2 rope clamps.</p>	 <p>No. 135 TRIM CHAIN 3 links #10 single jack chain added to carriers to provide 3" of curtain height adjustment.</p>	 <p>No. 108DK DETACHABLE FLOOR BLOCK KIT 7 gauge steel plate with hardware for use with No. 108 Adjustable Floor Block for quick release.</p>	 <p>No. 10 PIVOT DEVICE Heavy steel construction with nylon wheels. Supplied with brackets for 1-3/8" O.D. pipe or tubing (recommended 6 foot maximum length). Allows masking draperies to be rotated to any angle. Working load limit: 75 pounds.</p>
 <p>No. 10X INDEXING PIVOT DEVICE Pivot device with special plate to index rotation at 22-1/2 degree increments. Supplied with brackets for 1-3/8" O.D. pipe or tubing (recommended 6 foot maximum length). Working load limit: 75 pounds.</p>	 <p>No. 108K BRAKE KIT Spring loaded arm with neoprene pad. Add to pivot device to prevent undesired movement along track.</p>	 <p>No. 454 Curtain Machine</p> <p>See pages 44-51 for curtain machines</p>	

GENERAL SPECIFICATIONS: STANDARD DUTY STRAIGHT TRACK

Provide **Model 101S** as manufactured by H & H Specialties Inc., South El Monte, CA.
 Track shall be 16 gauge galvanized steel, roll-formed to 1-3/4" wide X 2" high channel with continuous slot in bottom. Provide unspliced in lengths up to 26'.
 Suspend track on 6' maximum centers with two-piece clamp hanger formed from 11 gauge steel. Provide 2' overlap at center, rigidly separated by two overlap clamps. Install end stop with cord support at each track end. Where lengths exceed 26', connect tracks with 12" long, two-piece splicing clamp of 12 gauge steel.
 Provide single carriers, spaced on 12" centers, constructed of two polyethylene wheels fastened parallel to formed steel carrier body with swivel hook for attachment of curtain.
 Master carriers shall be 4-wheel assemblies with formed steel bodies and two swivel hooks each. Connect to operating line with two machined steel cord clamps captured within each body.
 Single and double end pulleys shall clamp securely to the underside of the track channel and shall contain 2-1/2" diameter sheaves enclosed in steel housings to prevent operating line from escaping the grooves. Nylatron GS sheaves shall be molded around shielded and greased ball bearings and grooved to accommodate up to 1/4" operating line.
 Provide floor block in 12 gauge steel housing containing 4" Nylatron GS, ball bearing sheave. Sheave axle shall lock at any point within 9" vertical slots to allow tension adjustment of operating line.
 Black operating line shall be 1/4" diameter, stretch-resistant rope with spun polyester outer jacket double braided over solid polyester core.
 All steel components shall be zinc plated to resist corrosion.

Provide **Model 116S** as manufactured by H & H Specialties Inc., South El Monte, CA.
 Track shall be 16 gauge galvanized steel, roll-formed to 1-3/4" wide X 2" high channel with continuous slot in bottom. Provide unspliced in lengths up to 26'.
 Suspend track on 6' maximum centers with two-piece clamp hanger formed from 11 gauge steel. Provide 2' overlap at center, rigidly separated by two overlap clamps. Install end stop with cord support at each track end. Where lengths exceed 26', connect tracks with 12" long, two-piece splicing clamp of 12 gauge steel.
 Provide single carriers, spaced on 12" centers, constructed of two nylon-tired ball bearing wheels fastened parallel to formed steel carrier body with swivel hook for attachment of curtain.
 Master carriers shall be 4-wheel assemblies with formed steel bodies and two swivel hooks each. Connect to operating line with two machined steel cord clamps captured within each body.
 Single and double end pulleys shall clamp securely to the underside of the track channel and shall contain 2-1/2" diameter sheaves enclosed in steel housings to prevent operating line from escaping the grooves. Nylatron GS sheaves shall be molded around shielded and greased ball bearings and grooved to accommodate up to 1/4" operating line.
 Provide floor block in 12 gauge steel housing containing 4" Nylatron GS, ball bearing sheave. Sheave axle shall lock at any point within 9" vertical slots to allow tension adjustment of operating line.
 Black operating line shall be 1/4" diameter, stretch-resistant rope with spun polyester outer jacket double braided over solid polyester core.
 All steel components shall be zinc plated to resist corrosion.

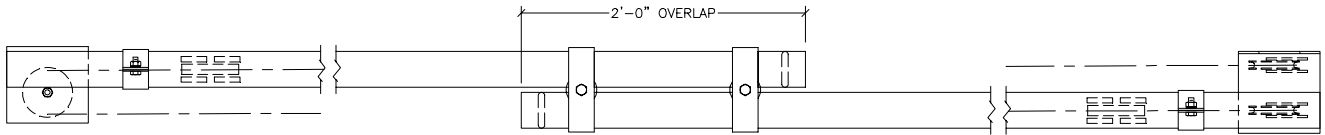
100 SERIES COMPLETE TRACK COMPONENT GUIDE

For COMPLETE tracks with aluminum channel, substitute 110A for 110S.

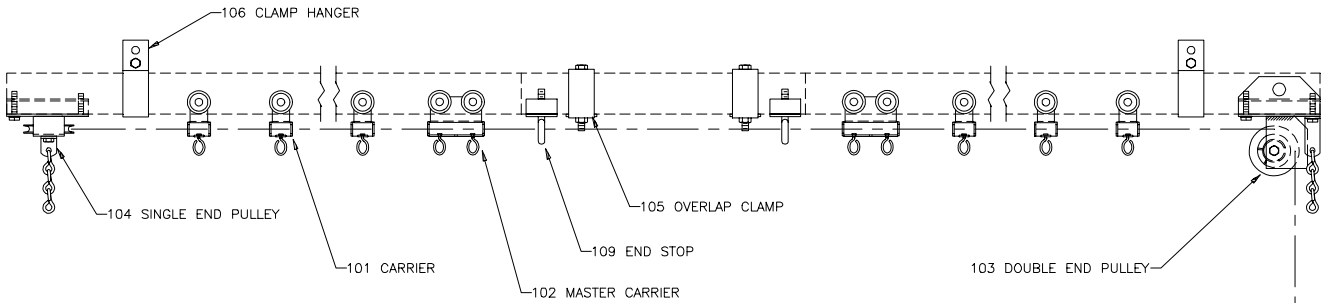
PART #	DESCRIPTION	101S	101W	116S	116W
101	Single Carrier	•	•		
102	Master Carrier	•	•		
103	Double End Pulley	•		•	
104	Single End Pulley	•		•	
105	Overlap Clamp	•		•	
106	Clamp Hanger	•	•	•	•
107*	Splice	•	•	•	•
108	Adjustable Floor Block	•		•	
109	End Stop & Cord Support	•	•	•	•
110S*	Track	•	•	•	•
114	1/4" Operating Line	•		•	
116	Nylon B.B. Single Carrier			•	•
117	Nylon B.B. Master Carrier			•	•

* Track lengths and splices supplied as required from stock sizes.

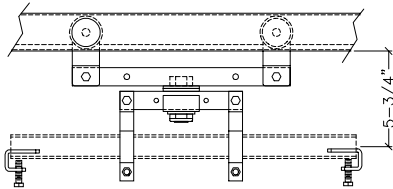
100 SERIES TRACK DIMENSION DETAIL



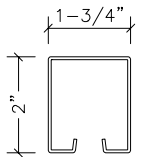
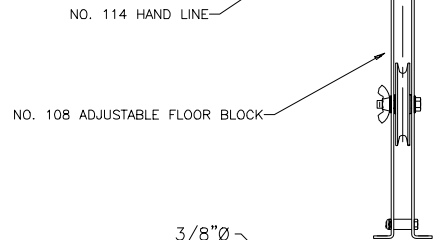
PLAN - MODEL 101S COMPLETE TRACK



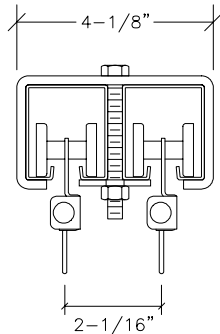
ELEVATION - MODEL 101S COMPLETE TRACK



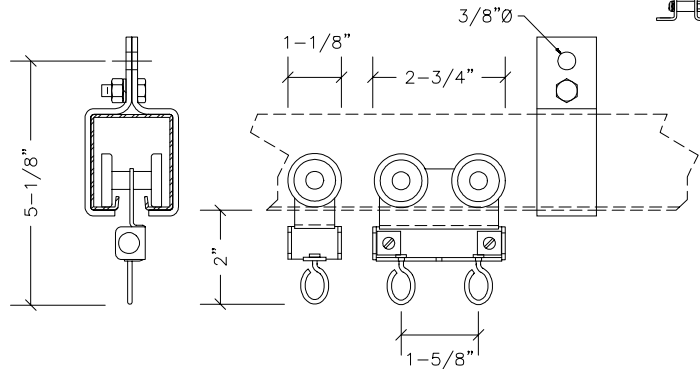
#10 PIVOT DEVICE



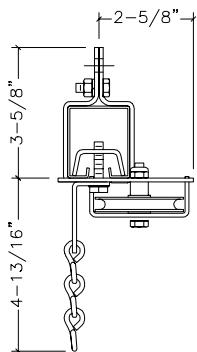
#110 TRACK



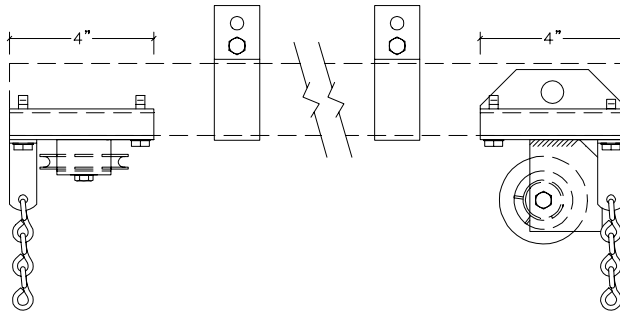
TRACKS AT CENTER OVERLAP



#101 SINGLE CARRIER AND #102 MASTER CARRIER



#104 SINGLE END PULLEY



#103 DOUBLE END PULLEY